

INTEGRATED VILLAGE DEVELOPMENT PROGRAM

ANNUAL REPORT 2024-25



FOREWORD

Our commitment to Integrated Development

Within these pages, we share the journey and impact of the Integrated Village Development Program (IVDP) over the past year. Rooted in a profound understanding of the interconnected fabric of village life in Odisha, IVDP was envisioned as a holistic response to the multifaceted challenges faced by our communities. Through IVDP, we are striving to create a meaningful and durable change.

We recognized that lasting progress requires more than isolated interventions; it demands a unified approach that nurtures growth across livelihoods, education, health, and the environment – a synergy that empowers villages from within. We nurture a culture of self-reliance and economic growth throughout the localities we serve. This builds their capacity for independent stride and reduces reliance on external aid.

This report encapsulates our efforts to lay a strong foundation for lasting change in this region. It details the measures we've implemented across key thematic areas – Environment, Empowerment, Education, Health & Nutrition.

This initiative is born out of a strong comprehensive grasp of the developmental disparities that persist within the aspirational districts of Odisha. For far too long, these areas have faced challenges of grave poverty, hindering the overall advancement of the state. IVDP is our commitment to addressing this complex issue through a holistic and integrated approach. We also strive to promote a proactive approach to local engagement and collaboration with local stakeholders.

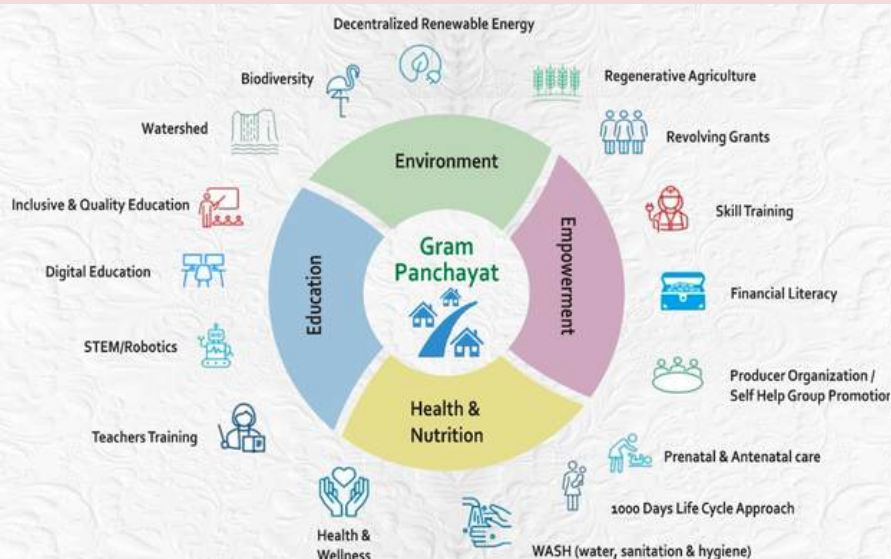
We firmly believe in the power of collaboration and ownership within the people. This report is a testament to the dedication of our teams, the invaluable support of our partner, line departments, other stakeholders, and most importantly, the active participation, resilience, and spirit of the beneficiaries themselves.

It is this collective effort, this shared vision, that is driving transformative change. It is with deep appreciation that we acknowledge the tireless efforts and unwavering dedication of the entire team working on the IVDP.

Their steadfastness to strengthen bottom-up initiatives for local betterment, diligent work in implementing the various interventions, and ability to navigate challenges with perseverance have been instrumental to the progress we have achieved. From the field staff engaging directly with communities to the program manager overseeing the project's execution, each member has been playing a crucial role in driving positive change in the lives of the people we serve.

Furthermore, we are committed to expanding these services and strategies, ensuring that the marginalized sections of the society have the opportunity to thrive too. By facilitating strategic partnerships, promoting ownership, and leveraging innovative solutions, we aspire to create lasting and substantial change, empowering the underserved to achieve their full potential and build a more prosperous and equitable future for all.

INTEGRATED VILLAGE DEVELOPMENT PROGRAMME



FROM THE MANAGING DIRECTOR'S DESK

Dear Stakeholders,

In today's dynamic world, an organisation's role extends beyond conventional development work; it calls for a deep-rooted commitment to facilitating inclusive and equitable progress. At Mahashakti Foundation, we firmly believe that our success is intrinsically linked to the well-being of the communities we serve. Guided by a steadfast commitment to collaboration, convergence, and sustainability, we align our Integrated Village Development Program (IVDP) with the broader goals of equitable and holistic development. The past year has been both challenging and rewarding. Our interventions have reached thousands of families, empowering them with the knowledge, skills, and resources needed to build secure livelihoods.

Our approach is rooted in a deep understanding of Odisha's developmental landscape, particularly the historical disadvantages experienced by areas like the KBK (Kalahandi-Balangir-Koraput) region. We recognise that issues such as entrenched poverty, malnutrition, limited access to essential healthcare and quality education, and environmental degradation are interconnected and demand comprehensive and integrated solutions. Through the IVDP, we strive to empower communities and build a strong foundation for long-term progress. Our initiatives focus on enhancing environmental and ecological viability by optimizing water resources and restoring ecological balance, for example, through excavation and renovation of farm ponds, building of check dams and diversion weirs, fruit bearing orchard distribution, and crop diversification model, which in turn reduces dependency on erratic rainfall and vulnerabilities from extreme weather conditions. We are also committed to empowerment by creating economic opportunities through skill development training, establishing Custom Hiring Centres, model nurseries, and Backyard Poultry and Goat Rearing, thereby strengthening local institutions and livelihoods.

Our education initiatives focus on improving school infrastructure, advocating inclusive and quality education, and promoting engagement through the involvement of parents to improve the enrollment and retention rates in schools. The programs on health and nutrition aim to halve malnutrition among young children and pregnant women, emphasize essential care practices during the first 1000 days of life, and nurture supportive environments for healthy development.

IVDP is not simply a series of projects but a transformative effort reflecting our deep commitment to fostering social, economic, and environmental advancement in these historically underserved regions of Odisha. We also recognize the vital importance of integrating the Sustainable Development Goals (SDGs) into the core of our IVDP strategy and aim to contribute significantly to these key global targets through strategic interventions and initiatives.

As we move forward, we recognize that the journey of rural transformation is ongoing. The road ahead demands continued innovation, collaboration, and a people-centric approach to development. We are committed to expanding our outreach, scaling up successful models, and embracing technology-driven solutions to enhance the impact of our programs.

I extend my deepest gratitude to our dedicated team, partner organization - LTIMindtree Foundation, and, most importantly, the communities who place their trust in us. Your support fuels our mission, and together, we will continue to build a brighter, more sustainable future for rural India.

Thank you for your constant support, collaboration, and commitment.

Mr Jugal Kishore Pattnayak
Managing Director, Mahashakti Foundation

INTRODUCTION

Background of LTIMindtree's IVDP initiative

As a socially responsible organization, LTIMindtree is committed to inclusive growth and the upliftment of marginalized communities. With a sustained focus on collaboration, communication, and community-building, it adopted the IVDP initiative with a vision to drive transformative change across some of Odisha's most underserved regions. The program aligns seamlessly with its core CSR priorities, focusing on Environmental Sustainability, Women Empowerment, Education, and Health & Nutrition, while promoting locally anchored, participatory solutions to rural challenges.

The inception of IVDP stems from a strategic shift in CSR philosophy, moving beyond one-time aid to fostering long-term partnerships that strengthen community capabilities. After conducting comprehensive needs assessments in vulnerable areas of Odisha, the company identified Kalahandi, Balangir, and Bargarh districts as key focus areas, owing to their socio-economic backwardness, limited access to essential services, and high poverty rates.

By enabling access to critical services and nurturing self-reliance, the initiative seeks to empower marginalized populations. Its participatory model reflects a belief in generating sustainable impact through holistic engagement, rather than isolated efforts. Addressing multiple aspects of rural life, IVDP presents a robust framework for inclusive development.

Launched with the goal of building resilient village ecosystems, the initiative targets both direct and indirect beneficiaries. Spread across 15 Gram Panchayats in 3 blocks and districts, it engages a wide spectrum of stakeholders, including farmers, women, youth, health workers, and community leaders. Through this multi-dimensional approach, the initiative envisions a future where empowered communities can access opportunities, drive progress, and sustain development on their own terms.

While large in scale, IVDP remains deeply rooted in the company's guiding principles of accountability, impact, and long-term responsibility, hallmarks of its overall CSR commitment.

Partnership with Mahashakti Foundation

The IVDP was implemented in collaboration with Mahashakti Foundation (MSF), as we're a grassroots organization with a longstanding presence and deep-rooted engagement in Odisha's rural landscape. Having worked extensively across the targeted geographies of Kalahandi, Balangir, and Bargarh for several years, it enabled us to gather extensive contextual understanding, cultural sensitivity and establish trust among the people. Our strengths of the region helped shape an intervention model that was both community-led and impact-oriented. The proximity to the folks and institutions of the locale enabled the smooth facilitation of activities like stakeholder engagement, beneficiary mobilization, and grassroots coordination. Our approach ensured that the program was not only community-led but also tailored to local realities, providing it a more impactful scale.

In partnership with LTIMindtree, we co-designed a participatory framework that emphasized inclusivity, ownership and empowerment. This collaboration allowed us to remain responsive to the unique needs of the communities while aligning with broader development goals. Through the joint effort, we translated the vision of self-reliant and empowered rural people into tangible, measurable and multidimensional outcomes, setting a precedent for scalable village development.



Geographic coverage and target communities

The IVDP implemented by Mahashakti Foundation, covers 15 Gram Panchayats across 3 blocks in 3 districts of Odisha. In Madanpur Rampur Block of Kalahandi District, the program operates in the Gram Panchayats of Dom Karlahunta, Manikera, Mohangiri, Dedsuli, and Singapur, benefiting a population of 23,523. In the Gudvella Block of Balangir District, the intervention spans Madhekela, Tentulikhunti, Deuligudi, Gudvella, and Ghuna Gram Panchayats, reaching 24,679 individuals. Similarly, in the Paikmal Block of Bargarh District, the program is active in the Gram Panchayats of Jhitki, Chhindekela, Mithapali, Bartunda, and Jamseth, impacting a population of 20,734.

The IVDP targets a diverse range of beneficiaries across the districts of Balangir, Bargarh, and Kalahandi. The direct target groups include farmers, children aged 0-3 years, mothers, key community actors, adolescent girls, various secondary stakeholders, as well as frontline health workers such as Anganwadi Workers, ASHA Workers, and Auxiliary Nurse Midwives (ANMs). The indirect beneficiaries comprise the households residing in the intervention villages, who benefit from the improved access to services, enhanced awareness, and strengthened community structures facilitated by the program.

AREA OF OPERATION



Objectives of IVDP

Environment

- To optimize water allocation, storage, and utilization to effectively meet a range of needs, including irrigation and ecosystem requirements.
- To protect and restore natural habitats, preserve biodiversity, and maintain ecological balance within the project area.
- To reduce vulnerability and improve the living standards of underprivileged families by focusing on key livelihoods such as watershed management, agriculture, horticulture, and livestock.
- To increase and diversify household income in a sustainable manner.

Empowerment

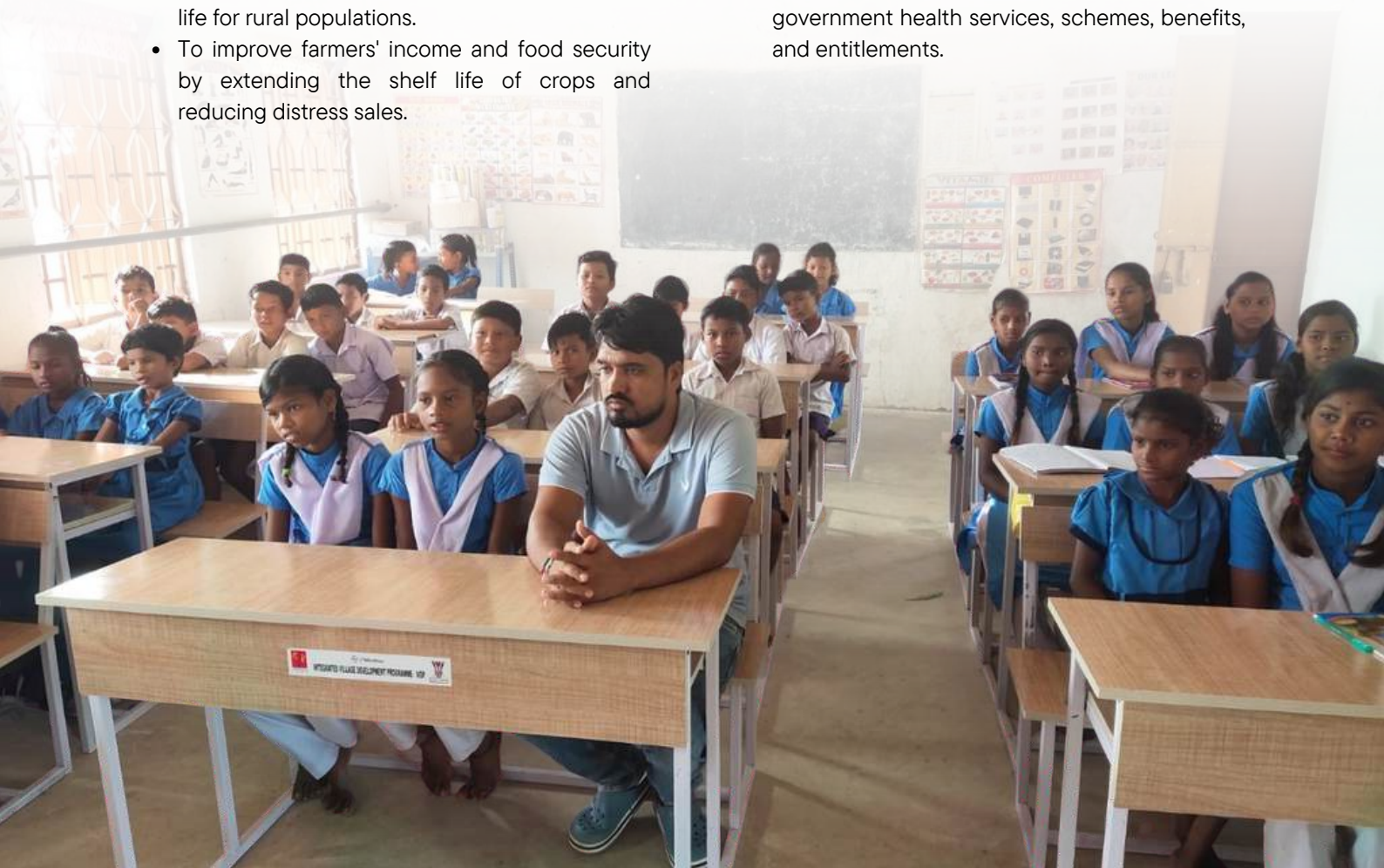
- To enhance livelihoods through the promotion of various enterprises, value addition, and processing activities.
- To strengthen rural livelihoods by building knowledge through Expert Connectivity, reducing costs and time, and providing timely information and support.
- To bridge the gap in access to services and act as a critical conduit to improve the quality of life for rural populations.
- To improve farmers' income and food security by extending the shelf life of crops and reducing distress sales.

Education

- To increase enrollment and retention rates in secondary and high schools.
- To improve the quality of education by ensuring a safe, inclusive, and supportive learning environment.
- To build the capacity of teachers to deliver gender-responsive education.
- To foster community engagement by involving parents, Panchayati Raj Institution (PRI) members, and Community-Based Organizations (CBOs) in educational activities.

Health & Nutrition

- To reduce the prevalence of malnutrition by 50% among children (0-6 years) and pregnant women.
- To raise awareness among key stakeholders and parents about the importance of the "First 1000 Days of Life," promoting changes in attitudes and skills, and creating a supportive enabling environment for sustained behavioral changes.
- To ensure that 100% of households/eligible beneficiaries in the project area have access to government health services, schemes, benefits, and entitlements.



Methodology and Strategies

Mahashakti Foundation's Integrated Village Development Program (IVDP) is anchored in a community-centric approach, where local ownership and participation are central to every intervention.

1. Participatory Planning and Community Engagement

- Participatory Rural Appraisal (PRA) methods were strategically applied to ensure meaningful community engagement and ground-level insights. Tools such as Focus Group Discussions and transect walks were conducted, enabling villagers to actively articulate their challenges, existing resources, and development priorities.
- The FGDs were carefully designed to delve into a wide range of thematic areas - spanning education, health, social inclusion, access to entitlements, and livelihood prospects - allowing for a comprehensive understanding of the local socio-economic landscape. This participatory approach helped align project interventions with real community needs.
- Community involvement in all stages of the program - from planning to implementation - to ensure ownership and relevance.

3. Community-led implementation

- The IVDP emphasizes a bottom-up approach where community members are not just beneficiaries but active participants in planning, execution, and monitoring of interventions.
- It reinforces ownership, as villagers actively contribute to the development of assets such as farm ponds, check dams, orchards, and solar energy systems.
- These initiatives strengthen grassroots governance and support self-reliance, allowing communities to maintain and scale efforts beyond the project's duration.

2. Multi-Stakeholder Convergence

- Panchayati Raj Institution members trained in RTE, NEP, and local governance frameworks to align project efforts with government schemes.
- Convergence with government departments like Agriculture, Horticulture, Health, Education, and Women & Child Development, ICDS, Panchayati Raj systems for health camps, training, and on-ground monitoring.
- Government schemes availed such as Odisha Food Security Scheme, Mukhyamantri Krishi Udyog Yojana, Utkarsh scheme, Chief Ministers Employment Generation Scheme (CEGS), and so on.
- Collaboration with School Management Committees, teachers, Anganwadi Workers, and ASHAs to improve service delivery and learning outcomes.

4. Awareness and Behavior Change Communication (BCC)

- Use of BCC campaigns, community outreach, and school engagement to promote behavior change in areas like health, hygiene, gender equity, and education.
- Tailored support and messaging for SC/ST families, economically marginalized households, women-headed families, and vulnerable groups such as adolescent girls and the elderly.

KEY THEMATIC AREAS



ENVIRONMENT

Environmental integrity is a critical pillar of rural development, particularly in regions where livelihoods are deeply intertwined with natural resources. Rural progress hinges on a healthy ecosystem, which ensures long-term agricultural productivity, access to clean water, and resilience against shifting climate patterns - all of which directly impact the wellbeing of the communities. The programme focuses on the rejuvenation and conservation of available resources through interventions like the construction of check dams, farm ponds, and plantation drives. Farmers were facilitated to adopt crop diversification practices and development of fruit orchards suited to local soil and weather conditions, aiming to diversify income sources and reduce dependency on traditional crops prone to failure due to vulnerabilities arising out of climate change.



EMPOWERMENT

The empowerment initiatives under the IVDP are rooted in enhancing livelihoods through the promotion of diverse rural enterprises and value-added activities. By equipping community members with necessary skills and resources, the program seeks to generate persistent revenue streams and reduce vulnerability to market fluctuations. The program also functions as a vital conduit in bridging the gap between rural stakeholders and essential services such as facilitating access to modern agricultural tools to farmers, skill-building programs for women, and vocational training programs for young girls, to start micro-enterprises, ensuring sustainable income sources. Collectively, these initiatives have not only promoted economic growth but also instilled confidence and a sense of purpose among the beneficiaries, subsequently building a culture of self-sufficiency, local participation, and holistic rural development.



HEALTH & NUTRITION

Health and Nutrition forms the bedrock for human capital development and overall community well-being. Adequate nutrition and access to basic healthcare within an IVDP framework directly contribute to improved health outcomes, reducing morbidity and mortality, particularly among vulnerable populations. Crucially, proper nourishment during formative years fosters optimal physical and cognitive development. A range of impactful health and nutrition initiatives were conducted to improve community well-being, including awareness workshops on primary health care and sanitation, village-level Nukkad Nataks, and specialized trainings on critical early childhood stages. Health screening camps and introduction of ATM Health Machines brought essential services within close proximity to the rural communities. Collectively, these interventions aim to build healthier, more informed communities through prevention, care, and awareness.



EDUCATION

Education being a cornerstone of rural development, the IVDP lays special emphasis on holistically strengthening the academic ecosystem of the villages. It helps break the cycle of poverty and drives inclusive, long-term rural development. Through multiple targeted interventions, the initiative aimed to ensure equitable access to quality education, particularly for students from marginalised sections. One of the key milestones was the inauguration of a Learning Centre, envisioned as a free coaching facility, providing critical academic support to many children, aiming to reduce dropout rates and boost performance in secondary education. Efforts were also made to improve basic infrastructure in government schools. By bridging learning gaps, encouraging community participation, and ensuring a supportive learning environment, the program continues to empower the younger generation to aspire for a better, brighter future through the power of education.

BLOCKWISE INTERVENTION

Gudvella Block

Gudvella block in Balangir was strategically selected for the IVDP intervention due to its unique socio-economic profile and existing gaps in development. With illiteracy levels hovering around 31.4%, the need to strengthen educational access and awareness was evident. The region continues to suffer from poor access to healthcare and low agricultural productivity. A large proportion of the population comprises marginalized communities, including 20.43% small farmers and 71.27% marginal farmers, with only 19.94% of cultivated land being irrigated. The local agriculture is primarily dependent on rain-fed systems, making it vulnerable to climate variability. Furthermore, 66.3% of women respondents in Gudvella identified as housewives, indicating a need for livelihood diversification and women's economic empowerment. These indicators highlight the urgent requirement for integrated development strategies in the block.

1. ENVIRONMENT & ECOLOGICAL SUSTAINABILITY

Excavation of New Farm Pond: The excavation of a new farm pond in Kendupadar village, under Tentulikhunti Gram Panchayat, marks a transformative step in advancing agricultural development in the region. Designed as a critical water resource, the pond plays a pivotal role in providing a reliable source of water for irrigation. With its substantial storage capacity, the pond is set to significantly boost agricultural productivity by reducing the farmers' reliance on erratic rainfall.



1

Excavated Pond



45,60,000

Water holding Capacity in Litres



16 Acres

Land Irrigated



19

Farmers of benefitted



Check dam and diversion weir:

A check dam is being constructed to strengthen irrigation infrastructure in Tashugada and Bagbahal villages, under Ghuna Gram Panchayat in Gudvella Block. The dam is strategically located on a seasonal stream flowing from a nearby hill, with the objective of harnessing runoff rainwater to support the irrigation of agricultural land. The check dam is designed to retain monsoonal runoff, thereby enabling better soil infiltration and decreased erosion.

Complementing this, two diversion weirs are also being constructed - positioned at the upstream and downstream ends of the stream, which are aimed at efficiently channeling water for enhanced coverage and usage by farmers. The combined infrastructure is expected to significantly boost irrigation potential, benefiting an additional 8 –10 acres of farmland along the stream's course. This intervention is poised to improve water management, increase agricultural productivity, and contribute to the broader goal of ensuring sustainable rural livelihoods in the region.



1

No. of check dams constructed



2

No. of Diversion weirs constructed



13,20,000

Water holding Capacity in Litres



1,44,000

Water holding Capacity in Litres



16 Acres

Land Irrigated



33 Acres

Land Irrigated



22

Farmers of benefitted



24

Farmers of benefitted



Fruit-bearing orchard promotion: 20 acres of fruit-bearing orchards across five Gram Panchayats in Gudvella Block have been established. This initiative directly supports local farmers by promoting agricultural diversification and climate resilience. A total of **1,300 high-quality fruit saplings** – including Mango, Guava, Lemon, Coconut, Litchi, and Sapota – were distributed. This intervention serves as a stable income-generating strategy for marginalized farming households, many of whom frequently face crop failures due to vulnerabilities faced due to climate change and recurring natural calamities.

Farmer Field School (FFS): FFS is a hands-on, participatory method of farmer education where learning takes place directly in the field through observation, practical experience, and peer-to-peer knowledge sharing. In this initiative, Shri Haldhar Majhi, a progressive farmer from Lukapada village under Madhekela Gram Panchayat, has proposed to establish a Farmer Field School on his 1-acre land. After receiving his application, the IVDP Block Coordinator was notified, following which agricultural experts and senior project officials conducted a site visit for assessment. In the initial phase, half an acre of his land has been allocated as a demonstration plot. Preparatory work has commenced, and small cultivation beds have been developed for growing different vegetables and leafy greens. Going forward, the FFS will serve as a platform to train farmers in the use of modern agricultural tools and advanced farming practices.



Key Highlights of FFS:

- **Participatory Learning:** Farmers will actively learn through practical field exercises, discussions, and mapping activities.
- **Group-Based Approach:** Groups of farmers will engage in regular sessions during the Kharif season, fostering collective learning and shared problem-solving.
- **Season-Long Engagement:** The training will cover the full cropping cycle, offering a comprehensive understanding from sowing to harvest.
- **Comparative Field Trials:** Farmers will carry out side-by-side trials comparing conventional practices with modern methods.
- **Community Orientation:** Introductory meetings will be organized with local farmers and villagers to familiarize them with the FFS concept and its advantages.

Model Nursery: A model nursery has been established in Gudvella village managed by Green Gudvella FPCL to support nearly 1,500 farmers with access to quality saplings year-round. Equipped with advanced technological features such as automated and precise temperature and climate control, and efficient watering systems, it ensures healthy, high-yield planting materials. The initiative aims to boost productivity and promote sustainable agriculture in the region.



4-5

Batches per Year



15k-20k

Capacity of saplings



Average Income
generated per Up to

30k / batch



Tomato, Chilli, Brinjal, Cauliflower,
Cabbage, Pumpkin, and so on
Available saplings



Solar Cold Storage Units: The Western part of Odisha, predominantly agricultural, faces significant post-harvest losses due to a lack of cold storage facilities. With nearly 85% of the population engaged in farming, surplus vegetable production often goes to waste, drastically reducing farmers' profits. To address this issue, under the IVDP, two 5-metric ton capacity solar cold storage units have been installed in Pendimunda village of Tentulikhunti Gram Panchayat, Gudvella block.



2 solar-powered cold storage units, each with a 5-metric-ton

Solar Street Lights: In Gudvella, the installation of solar lights has significantly enhanced visibility around schools, health centers, and common village areas. By reducing dependence on erratic grid electricity, this sustainable solution ensures consistent lighting and has improved the overall public infrastructure experience, particularly in education and health access after sunset.



5 Number of Lights Installed



SUCCESS STORY

Planting Prosperity through Orchard Development

Background

Nestled within the tribal heartland of Madhekela Gram Panchayat in Gudvella Block, Lukapada is home to nearly 300 households, predominantly from tribal communities. The economic backbone of the village has long relied on subsistence farming and the collection of Non-Timber Forest Products (NTFPs). With most cultivators being small and marginal farmers, the challenges are compounded by the topography - upland (Bhata) terrain and sandy soil near the river - that limits productivity and income generation.

The scarcity of irrigation, poor soil fertility, and fragile economic conditions have historically left much of the land underutilized, leaving families vulnerable and with few opportunities to improve their livelihoods.

IVDP Intervention

In 2024, as part of the Integrated Village Development Programme, Mahashakti Foundation introduced a transformative livelihood enhancement initiative in Lukapada. Recognizing the potential of orchard-based farming in upland areas, the program supported six carefully selected farmers to establish fruit orchards on their unused land.

Priority was given to economically disadvantaged households with upland areas that had remained barren for years. The selected farmers, Santaraj Majhi, Haldhar Majhi, Nilu Majhi, Ananta Majhi, Surendra Majhi, and Bhesaja Majhi, each developed one acre of orchard land, totaling six acres under cultivation.

Each acre was planted with:

25 Mango saplings

10 Lemon saplings

Remaining: Sapota, Litchi, and Guava, making up a total of 65 saplings per acre

The intervention included land development support, high-quality saplings, protective fencing, and access to irrigation. A 3 HP solar-powered borewell was installed to ensure regular water supply - an essential component for nurturing young orchards and enabling multi-cropping.

Impact

The orchard initiative created long-term prospects through fruit farming and also encouraged the farmers to grow short-term seasonal vegetables using the newly developed irrigation system. One inspiring example is Santaraj Majhi:

Brinjal cultivation (10 decimals):

₹15k
Earned

Cabbage cultivation (20 decimals):

₹25k
Earned

Watermelon cultivation (50 decimals):
Produced 30 quintals, sold at ₹10/kg

₹10k
Earned



Total seasonal income: ₹60,000 from diversified vegetable cultivation on orchard land. The other five farmers followed similar paths, integrating vegetable crops into their orchard land. This not only optimized the use of available land and water resources but also provided immediate financial returns while they wait for the fruit trees to mature.

Testimonial

“Earlier, I could only sit and watch my land remain unused. I didn’t have the money to cultivate it. Mahashakti Foundation encouraged and supported me to plant fruit trees. Now, on the same land, I’ve grown brinjal, cabbage, and watermelon and earned ₹60,000. This has brought a big change in my life. I am hopeful that next year, the fruit trees will also start bearing fruits.”

“ପୂର୍ବରୁ, ମୁଁ କେବଳ ବସି ରହି ମୋର ଜମି ଅବ୍ୟବହୃତ ପଡ଼ି ରହିଥିବା ଦେଖିବାକୁ ବାଧ୍ୟ ହଉଥିଲି। ମୋ ପାଖରେ ଟାଣ କରିବା ପାଇଁ ଟଙ୍କା ନଥିଲା। ମହାଶକ୍ତି ଫାଉଣ୍ଡେସନ୍ ମୋତେ ଫଳ ଗଛ ଲଗାଇବାକୁ ଉତ୍ସାହିତ ଏବଂ ସମର୍ଥନ କରିଥିଲା। ଏବେ, ସେହି ଜମିରେ, ମୁଁ ବିଲାତି, ବନ୍ଧାକୋବି ଏବଂ ଚଉକୁଳ ଟାଣ କରିଛି ଏବଂ ₹60,000 ରୋଜଗାର କରିଛି। ଏହା ମୋ ଜୀବନରେ ଏକ ବଡ଼ ପରିବର୍ତ୍ତନ ଆଣିଛି। ମୁଁ ଆଶା କରୁଛି ଯେ ଆସନ୍ତା ବର୍ଷ, ଫଳ ଗଛଗୁଡ଼ିକ ମଧ୍ୟ ଫଳ ଦେବା ଆରମ୍ଭ କରିବେ।”

Conclusion

The Lukapada orchard development initiative under IVDP stands as a shining example of how integrated, climate-resilient, and resource-efficient models can unlock new livelihood avenues for small and marginal tribal farmers. By combining orchard development with vegetable cultivation and solar-powered irrigation, the program has laid the foundation for sustained income and long-term resilience.

The transformation seen in Lukapada has sparked interest among other villagers, proving that with the right support and resources, even the most challenging terrains can become fields of opportunity and prosperity.





2. EMPOWERMENT

Custom Hiring Centre: A Custom Hiring Centre (CHC) has been established in Gudvella village, marking a significant milestone in supporting local farmers. This center serves as a valuable resource for the farmers in the region, enabling them to access modern agricultural equipment at affordable rental rates - removing the financial strain of purchasing such machinery outright. Managed by the Green Gudvella Farmers Producers Company Limited, the CHC offers a wide range of tools, including power tillers, seedling machines, various types of sprayers, water pump sets, and ploughs. Farmers can rent equipment based on their specific needs, especially during peak agricultural seasons, ensuring timely and efficient operations.

 **300+**
farmers served directly

 **3**
visits per month by
farmers to the CHC

 **₹50-₹500**
per equipment use

 **₹12k-15k**
monthly average income generated



Model Backyard Poultry Rearing: In a step towards empowering rural women and enhancing their livelihood opportunities, 150 women from underserved communities have been supported with indigenous poultry units. 120 progressive women received 30 chicks each and 30 women received 10 chicks. Each beneficiary received 30 healthy, month-old chicks of native breeds, opening up a reliable avenue for income generation through backyard poultry rearing.



150

women beneficiaries



11,250-12k

Income generated (Estimated)



GOAT REARING:



120

beneficiaries
received
2 Goats each



for a cycle of
150
days



Estimated
income
₹10k



1

beneficiary
received
a Goat Shala



for a cycle of
150
days



Estimated
income
₹50k



Skill Development Training Centre:

A tailoring training program is being implemented to equip rural girls with vocational skills and promote self-employment. Led by experienced instructors, the initiative offers hands-on training and links participants to government schemes for future support. Upon completion, participants receive certificates in collaboration with NABARD.



2

Batches



50+50=100

girls trained in each batch



2.5k-3k

Approximate income / month



Crop Diversification: Under the IVDP, crop diversification has been promoted in the Gudvella Block to enhance farmers' resilience and reduce risks from mono-cropping. This approach allows multiple crops on the same land, improving soil health, reducing pest impact, and optimizing water use. It not only supports environmental sustainability but also expands farmers' income opportunities. The initiative is enabling farmers to adapt to changing climate conditions while ensuring better livelihoods.



Diversification into : Pulses (Like Moong), Oil seeds (Ground Nuts, Sun flowers etc) and Vegetables

Beyond the informative sessions, the training created a vibrant space for collaboration and cross learning where participants shared their experiences and challenges with one another. This peer exchange added depth to the program, fostering a sense of community and mutual support. By strengthening their capacity in goat and poultry farming, the initiative not only boosts household incomes but also contributes to long-term food security and their economic conditions.

Economic Impact:

- Access to multiple markets
- Diversified income streams
- Year-round crop productivity

Other interventions:

Vocational skill-building & training program:

Livestock Shed Construction

- Techniques for building durable, weather-appropriate animal shelters
- Focus on ventilation, hygiene, and space optimization

Disease Prevention in Livestock

- Identifying common illnesses
- Practical steps for early detection and control
- Vaccination and biosecurity measures

Feed Planning & Management

- Nutritional requirements for different livestock
- Feed scheduling and budgeting
- Storage and hygiene practices for fodder

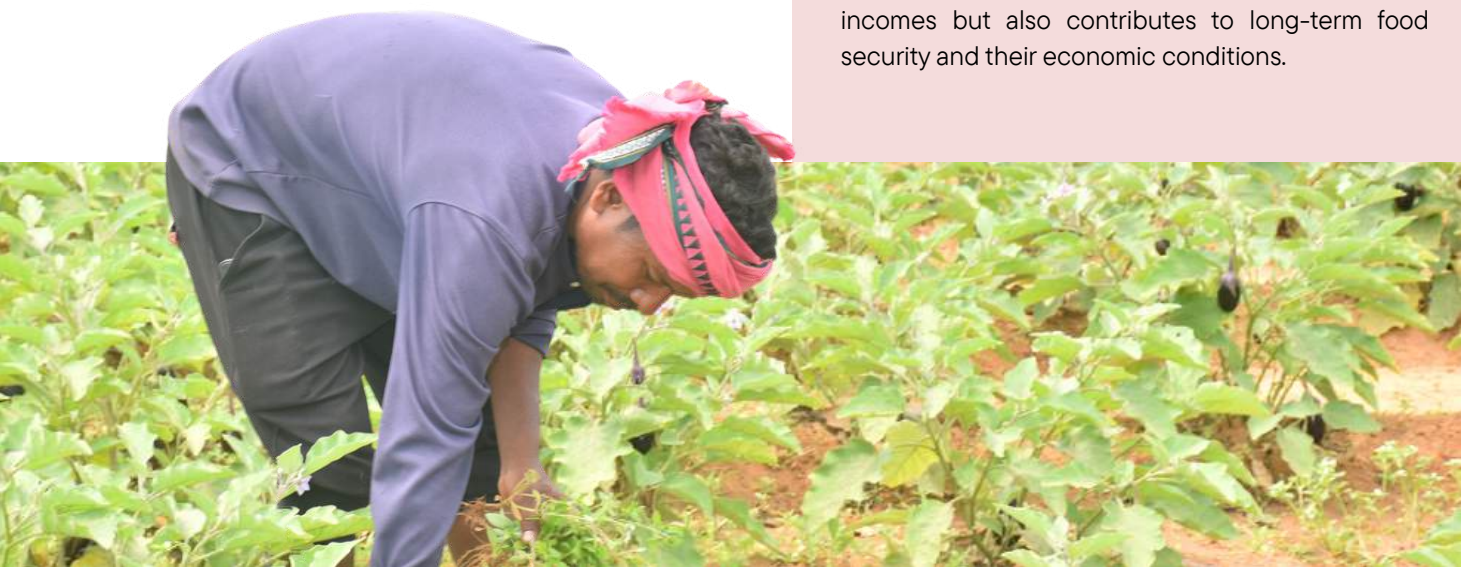
Understanding Feed Conversion Ratios (FCR)

- Calculating efficiency of feed-to-output (milk, meat, egg)
- Tips to improve feed utilization and reduce wastage

Promotion of Indigenous Poultry Breeds

- Training on rearing native poultry for backyard farming
- Benefits of local breeds: disease resistance, low maintenance
- Best practices for poultry shelter, feed, and care

Beyond the informative sessions, the training created a vibrant space for collaboration and cross learning where participants shared their experiences and challenges with one another. This peer exchange added depth to the program, fostering a sense of community and mutual support. By strengthening their capacity in goat and poultry farming, the initiative not only boosts household incomes but also contributes to long-term food security and their economic conditions.





SUCCESS STORY

Poultry Farming Uplifts Women in Dulikuna

Background

Dulikuna, a small village in the interiors of Gudvella Block, is home to several economically marginalized families. Among them, women often bear the brunt of financial instability, with limited opportunities for income generation. Last year, under the Integrated Village Development Programme, Mahashakti Foundation identified five such women from Dulikuna who were willing to take on a new journey - backyard poultry farming. These women, despite their economic hardships, were eager to engage in livelihood initiatives that could help them contribute meaningfully to their households.

IVDP Intervention

The intervention was implemented in a structured, phased manner with a focus on sustainability and ownership.

1. Capacity Building and Training

The first step was to equip the women with the necessary knowledge. A training program was conducted, covering:

- Basics of poultry farming
- Feeding and nutrition management
- Vaccination schedules
- Shelter construction and hygiene practices

The training not only built their skills but also boosted their confidence in managing livestock scientifically.

2. Infrastructure Support

Recognizing the importance of safe and secure shelter for poultry, the project extended material support for constructing small sheds. Each woman was provided with roofing sheets, iron doors, and wire mesh. The beneficiaries, taking ownership of the process, contributed by sourcing local materials like wooden poles and labor from their families. This collaboration made the intervention both cost-effective and participatory.

3. Livestock Distribution and Management

Each of the five women received 30 one-month-old chicks, which had already been vaccinated. The birds were released into their newly constructed backyard sheds, allowing them to graze in the open during the day and return to shelter at night. The women followed regular feeding and care schedules as advised during training.

Impact and Success Stories

Within two months, the results were clearly visible. On average, each household experienced minimal losses, with about 3 - 4 chicks succumbing to natural causes. The remaining 26–27 chicks grew to approximately 1 kg in weight, ready for sale.

One of the standout stories is that of Mrs. Renuka Dharua, who successfully sold 26 chickens at ₹350 each, earning a total of ₹9,100. Previously engaged in unstructured poultry rearing, she shared:

“Earlier I kept chickens here and there, without any plan. They used to die often, and there was no profit. Now, with the shed, proper feeding, and vaccinations, I’ve seen real income for the first time.”

The other four women echoed similar experiences, reporting profits, improved confidence, and plans to reinvest in additional batches.

Conclusion

The backyard poultry farming initiative under IVDP has not only provided an additional income source for these women but has also transformed their outlook towards livelihood generation. With minimal investment and structured support, the model has proven to be both scalable and sustainable.

This intervention is a testament to the vision of Mahashakti Foundation—to empower rural communities, especially women, by enabling them to become self-reliant and economically independent. The Dulikuna poultry initiative stands as a replicable model for other villages seeking grassroots livelihood solutions.



3. EDUCATION

Learning Centre Inauguration:

On July 4th, 2024, a Learning Centre was inaugurated at Ranimal Chhak in Ghuna Gram Panchayat of Gudvella block. The event was graced by **Shri Paneesh Rao, Global Head of LTIMindtree Foundation**, who emphasized the importance of improving the quality of education, creating a safe and inclusive learning environment, boosting enrolment and retention in secondary and high schools, and strengthening teachers' capacity to deliver gender-responsive education. He also highlighted the need for active community participation, including parents, PRI members, and CBOs. The event saw the presence of **Shri Jitendar Ghangas, Associate Director – CSR & Sustainability at LTIMindtree**, **Shri Jugal Kishore Pattnayak, Managing Director of Mahashakti Foundation**, **Ghuna GP Sarpanch Smt. Kabita Mahananda**, and the staff of Mahashakti Foundation.

The established coaching center aims to provide quality education free of cost to underprivileged children in the region. The center is primarily designed to support boys and girls from classes 7 to 10, ensuring they receive the academic guidance needed to continue their education and build a better future.



Class 7-10

boys and girls



27

Students joined





Benches and Desks Distributed to Upper

Primary Students in Gudvella Block

As part of the IVDP, benches and desks were distributed to Class 7 and 8 students in three upper primary schools of Gudvella Block. The beneficiary schools include Bagbahal UP School (Ghuna Gram Panchayat), Gunimunda UP School (Gudvella Gram Panchayat), and Atgaon UP School (Madhekela Gram Panchayat).

Earlier, students in these schools were compelled to sit on the floor during classes due to the lack of basic classroom furniture. Recognizing the need to improve the learning environment, school committees had formally requested support under the IVDP program. Responding to this, the project team provided

12 benches, desks were provided to each School.

significantly enhancing classroom comfort and contributing to a more conducive learning atmosphere for the students.

Infrastructure development Support

In Gudvella Block, a comprehensive set of infrastructure development was undertaken in building school infrastructure for students. These included drinking water installations with RO systems, toilet and washroom repairs, including shed, step work, construction of kitchen, veranda sheds and establishment of handwashing stations in Athgaon Upper Primary School and repairing of toilets, kitchen sheds and water installations with RO systems in schools like Dungibahal Upper Primary School.

Deulgudi and Athgaon Anganwadi Centres underwent essential repairs, including door and window replacements, tiling of verandas, dug wells, and water pipelines, all accompanied by drinking water access.

SUCCESS STORY

From Floor to Future: A Transformation at Atgaon UP School

Background:

Atgaon UP School, located in Madhekela Gram Panchayat of Gudvella Block in Balangir District, is home to 71 students. Despite their enthusiasm and eagerness to learn, these children face major challenges due to inadequate classroom infrastructure. The absence of proper seating arrangements previously forced students to sit on the floor for extended hours, leading to discomfort, poor posture, and related health issues. These conditions not only hindered their ability to concentrate but also negatively impacted their academic performance.

The lack of basic facilities created an uninspiring learning environment, which diminished students' motivation to attend school regularly. As a result, many children began to lose interest in their studies, and in some cases, this even led to irregular attendance or dropping out altogether.

Intervention:

Recognizing the urgent need for improved learning conditions, under the IVDP, proactive steps were taken to address the issue. A total of 12 sets of benches and desks were provided to the school, directly benefiting 24 students. This intervention helped create a more organized, comfortable, and conducive classroom environment, thereby enhancing the overall learning experience.

Impact:

- The introduction of proper seating has significantly improved students' ability to focus and engage with their lessons.
- The new desks and benches have enhanced physical comfort, posture, and reduced the strain caused by sitting on the floor for long periods.
- The overall classroom environment has become more welcoming, resulting in increased motivation and improved attendance among students.



Conclusion:

This initiative has greatly enhanced the physical learning environment at Atgaon UP School and contributed to the academic growth of its students. The IVDP has been instrumental in promoting quality education in this rural setting. Their contribution has ensured that students now have access to essential resources and improved infrastructure, laying a strong foundation for their educational journey ahead.

Testimonial:

"Since the introduction of new desks and benches, the lives of our students at Atgaon UP School have changed remarkably. No longer having to sit on the floor has allowed them to focus better, maintain good posture, and reduce fatigue. The students are now more motivated and excited to attend school regularly, which has led to noticeable improvements in academic performance.

For our teachers, classroom management has become much more efficient. The organized seating arrangement has made lessons more interactive and engaging, significantly improving the effectiveness of teaching. The classroom has transformed into a positive and supportive learning space, fostering growth and enthusiasm among both students and teachers alike."

— Headmaster, Atgaon UP School



4. HEALTH & NUTRITION

Awareness workshop on Primary Health Care and Sanitation:

A comprehensive awareness workshop on primary health care and sanitation was organized to educate rural communities on crucial health issues. Participants engaged in interactive discussions on nutrition, hygiene, sanitation, and access to clean drinking water. The workshop empowered community members to take ownership of local health outcomes. It also emphasized the importance of collaboration between village health committees and governance bodies for lasting impact.

Key Focus Areas

Nutrition & Malnutrition



Safe Drinking Water



Hygiene Practices



Primary Health Care Access



Sanitation Awareness



Outcomes



Improved grassroots awareness



Strengthened community ownership



Better coordination with village health committees



Focus on preventive care & sustainable practices

Three-Day Health Screening Camp Conducted in Gudvella Block

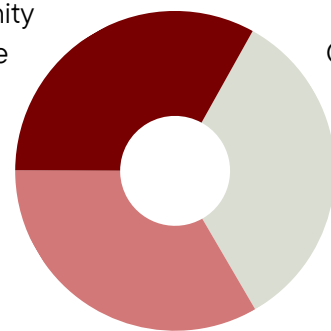
A three-day health screening camp was held near the Block Chowk in Gudvella to provide free medical check-ups and consultations to the rural community. Inaugurated by medical officers and supported by local health teams, the camp witnessed active participation. Over 231 individuals received health services, promoting early diagnosis and health awareness. The initiative emphasized the value of accessible healthcare at the grassroots level.

Participants Involved:

Community Resource Persons

Local Health Workers

231+ Community members



3 Days camp

Referred to nearest PHC/CHC

231 Screened People



Introduction of ATM Health Machines Enhances Diagnostic Services in Gudvella

For the first time in Gudvella, advanced ATM Health Machines were introduced during the health screening camp, revolutionizing access to diagnostic services in the region. These machines conducted over 15 different medical tests, offering accurate results and timely medical consultations. Supervised by Bedamata Organization and operated by technical experts, the initiative enabled early detection of multiple health issues. This marked a significant milestone in bringing modern healthcare technology to rural communities.

Impact:

- Improved rural access to diagnostic services
- Timely medical advice and referrals
- Boosted awareness about hidden health conditions
- Built community trust in technology-enabled healthcare

Celebration of World Breastfeeding Week

World Breastfeeding Week was observed at Gudvella Gram Panchayat to promote the importance of breastfeeding and maternal nutrition for infant health and development. The event emphasized exclusive breastfeeding for the first six months, continued breastfeeding with complementary food, and the importance of maternal nutrition before and after childbirth. It helped raise awareness on healthy infant feeding practices, empowered women with knowledge, and fostered a supportive environment for better maternal and child health outcomes.

Training on "1000 Days of a Child's Life"

Block-level training on the "First 1000 Days of a Child's Life" was held to raise awareness about this vital period of development from pregnancy to age two. The session stressed the importance of nutrition, healthcare, and emotional support for both mother and child. 70 participants, including frontline workers and community members from five Gram Panchayats, took part in the training. This initiative aims to strengthen early childhood care practices and improve maternal and child health outcomes across the region.

Training program on Exclusive Breastfeeding and Healthy Eating habits- GP level

The training program is conducted to educate mothers and caregivers about the critical role of breast milk in a baby's growth and immunity. It also promotes the importance of nutritious diets for both mother and child during early development. This awareness helps prevent malnutrition and supports healthier communities.

Participants Involved:



Anganwadi Workers & Helpers

ANMs & ASHA Workers

ICDS Supervisors

Focus Areas Covered:

Nutrition for mothers & children

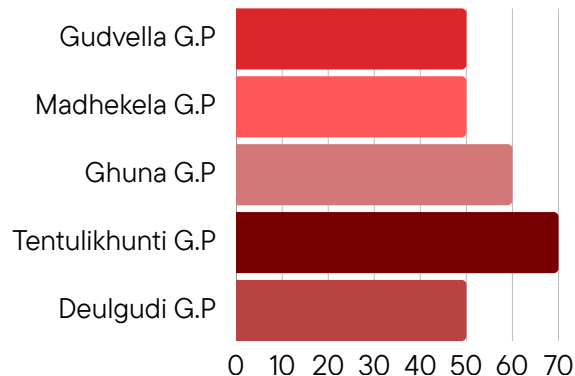
Access to maternal health services

Mental & emotional support

Hygiene & sanitation practices

Immunization awareness





Maternal, Infant, and Young Child Nutrition (MIYCN) block-level training

A block-level training program was organized to raise awareness about the importance of nutrition during key life stages - **adolescence, pregnancy, lactation, and early childhood**. A total of 70 participants, including adolescent girls, pregnant women, lactating mothers, Anganwadi Workers, and Community Resource Persons, took part in the session. The training helped participants understand the significance of exclusive breastfeeding, balanced diets, and complementary feeding practices. By equipping women and frontline workers with practical knowledge, the program aims to improve maternal and child health outcomes and foster healthier communities.



Village level Nukkad Natak on Sensitization on Child Health and Nutrition:

Mahashakti Foundation has launched a Nukkad Natak initiative in **10 villages across 5 Gram Panchayats** in Gudvella Block to raise awareness on key health and education issues. These plays focus on important topics such as the First 1000 Days of Life, Exclusive Breastfeeding, Primary Health Care and Sanitation, the National Education Policy, Right to Education, and School Dropout. Performed in local dialects like Sambalpuri and Kui, the plays use traditional music and dance to make complex issues relatable and engaging. This culturally rooted, interactive approach effectively educates rural communities, encourages dialogue, and empowers people to take action toward better health, nutrition, and education outcomes.



SUCCESS STORY

Health Intervention: Free Diagnostic Health Camp

As part of the healthcare component of IVDP, a **three-day Free Health Screening Camp** was organized in Gudvella village from 24th to 26th November 2024. A key highlight of this camp was the deployment of a Health ATM Machine, a state-of-the-art diagnostic device introduced in collaboration with Vedamata Organization, Bhubaneswar.

This compact yet powerful machine provided instant health diagnostics, generating over 15 types of medical reports within minutes, covering vital parameters such as blood pressure, blood sugar, BMI, ECG, oxygen saturation, and more.

Impact and Outcomes

- **Total Beneficiaries:** 231 individuals, including elderly citizens, women, and those suffering from chronic ailments.
- Beneficiaries were able to **consult qualified doctors** immediately after receiving their reports.

Critical cases were **referred to higher medical institutions** for advanced care, ensuring follow-up support.

A Story of Transformation: Shri Gokul Rana

Among the many who benefited was Shri Gokul Rana, a 51-year-old daily wage laborer from Dungibahal village under Gudvella GP. Gokul had been suffering from chronic stomach pain for several months but could not afford to visit a hospital or undergo tests.

When he attended the camp, the Health ATM detected underlying issues in his diagnostic report. The attending doctor provided immediate consultation and advised further examination. Gokul then visited **Bhima Bhoi Medical College & Hospital** in Balangir, where he received appropriate treatment.

Today, Gokul reports significant relief from his pain and credits the camp for making it possible:

"I never thought I would get such tests done for free in my own village. This camp gave me the help I had been waiting for."

Conclusion

The health screening camp in Gudvella was more than just a medical intervention—it was a life-changing opportunity for many underserved individuals. By combining technology, accessibility, and community outreach, the IVDP project has set a strong precedent for inclusive healthcare delivery in tribal areas.



BLOCKWISE INTERVENTION

MADANPUR RAMPUR BLOCK

M.Rampur in Kalahandi district was identified for this project due to its vulnerability to environmental and socio-economic challenges. While agricultural productivity has seen some improvement over the years, issues such as drought, deforestation, and poor access to credit and health services persist. The block has a literacy rate of 65.41%, with 35% of women being illiterate and a majority dependent on migration for income. Only 10.5% of households have access to irrigation, and 32.3% of women respondents are engaged in agriculture, reflecting both opportunity and constraint. Furthermore, 65.8% of households own livestock, and yet productivity remains low, emphasizing the need for technical support and value chain development. These indicators made M.Rampur a critical area for livelihood, education, and health-based interventions under IVDP.

1. ENVIRONMENT & ECOLOGICAL SUSTAINABILITY

Excavation of New Farm Pond: The excavation of a new farm pond in Dalabahali village, under Mohangiri Gram Panchayat, marks a significant step in strengthening agricultural resilience in the region. Intended to provide a reliable means of irrigation, the pond helps tackle the issues caused by unpredictable rainfall. It will enhance crop productivity and ease the pressure on natural water sources, meanwhile improving soil moisture conditions. This development not only supports local farmers in their agriculture but also contributes to long-term rural prosperity through improved water management.



1
Excavated
Pond



60 Acres
Land Irrigated



3.6M
Water holding
Capacity in Litres



31
Farmers of
benefitted



Check dam:

A check dam is being constructed in an effort to improve the irrigation infrastructure in Juger village under Manikera Gram Panchayat in M.Rampur Block. The dam is engineered to capture and store rainwater during the monsoon which can be later used to irrigate nearby agricultural lands. This structure boosts water retention while supporting groundwater recharge, laying the foundation for more productive farming.

Diversion weir:

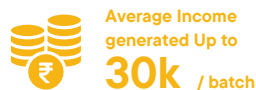
Additionally, four diversion weirs are also being constructed in Podelkuna and Panjibahali villages, under D.Karlakhunta and Mohangiri Gram Panchayat in M.Rampur Block. These weirs are strategically placed to regulate the natural flow of the stream, allowing water to be directed toward farmlands in a more efficient manner. This complementary setup is expected to significantly expand irrigation reach and ensure a more dependable water supply throughout the agricultural season.



Renovation of Farm Pond: The restoration of two ponds in Singpur and Katurupala villages signifies a major improvement in regional farming systems. The reinforced water bodies now offer dependable irrigation access during key cultivation phases. This development is expected to boost harvest output and lessen vulnerability to unpredictable weather. The presence of water in dry months also aids in preserving soil hydration and replenishing groundwater levels. Altogether, the effort advances eco-friendly agriculture and uplifts the socio-economic fabric of farming communities in the area.



Model Nursery: A model nursery has been established in Dumerguda village to support and empower local farmers with easy access to quality planting materials. Operated by a local farmer-producer organization, the nursery provides high-quality saplings at affordable rates throughout the year. Equipped with modern features like automated climate control and efficient irrigation, it ensures optimal plant growth. This initiative boosts crop productivity and fosters the resilience of the rural agricultural economy.



Fruit-bearing orchard promotion: A fruit orchard initiative was introduced across multiple Gram Panchayats in M. Rampur Block to support local farmers with alternative income sources. Saplings of climate-resilient fruits like mango, guava, and lemon were provided based on soil and weather suitability. This effort encourages farmers to diversify their crops, reducing dependency on traditional farming impacted by climate change and strengthening resilience to environmental challenges.

20 Acres

of fruit-bearing orchards across the 5 GPs of M. Rampur Block, providing crucial support to local farmers.

A total of **1300** fruit saplings,

including Mango, Guava, Lemon, Coconut, Lichee, and Sapota



Solar Cold Storage Units:

The western region of Odisha, where agriculture is the primary livelihood for nearly 85% of the population, experiences considerable post-harvest losses due to the absence of cold storage infrastructure. As a result, surplus vegetable produce often perishes, leading to significant income loss for farmers. To mitigate this challenge, two solar-powered cold storage units were set up with a capacity of 5 metric tons each in the Madanpur Rampur block of Kalahandi district. These units aim to preserve perishable produce and enhance farmers' income security.



2 solar-powered cold storage units, each with a 5-metric-ton

Solar Street Lights:

To address safety concerns and improve night-time mobility in remote villages of M. Rampur, solar streetlights were installed in key public areas. This intervention has made pathways, village junctions, and community spaces more accessible after dark, especially for women, children, and the elderly. The initiative also fosters a sense of security and has encouraged community gatherings and events in the evenings.



130 Number of Lights Installed



SUCCESS STORY

How Solar Lights Transformed a Remote Tribal Village

Pajikeri, a remote village under Manikera Gram Panchayat in Madanpur Rampur Block of Kalahandi district, is home to 148 households, most of whom belong to tribal and marginalized communities. For years, the village remained cloaked in darkness after sunset due to the complete absence of street lighting, making everyday life challenging and unsafe, especially for women, children, and the elderly.

The lack of visibility not only restricted movement after dusk but also posed serious risks. There were frequent incidents of snake bites, accidental falls, and general discomfort in stepping out at night. Women avoided going to the toilet or fetching water in the evening, and children were unable to attend evening tuition classes due to safety concerns.

Recognizing these issues, Mahashakti Foundation intervened in 2024 under the IVDP Project by installing **five 30-watt solar-powered street lights** at strategic locations in the village. These included community junctions, internal pathways, and areas near public utilities to maximize impact.

The change has been profound. Today, Pajikeri's internal paths and key community spaces are well-lit, creating a safer and more vibrant atmosphere after dark. Children can now study in the evenings without fear, women feel more confident walking around the village, and elders attend community gatherings and health camps with greater ease. The lights have also enhanced social cohesion, enabling villagers to engage in evening discussions, cultural events, and communal activities.

These solar-powered lights are not only energy-efficient but also a sustainable solution, requiring minimal maintenance and offering reliable illumination year-round. In a region where the electricity supply is erratic, the solar units have proven to be a game-changer, demonstrating how a small intervention can bring dignity, safety, and inclusivity to rural life.

This initiative has received heartfelt appreciation from the community and stands as a beacon of hope for similar rural villages grappling with basic infrastructure needs.





2. EMPOWERMENT

Custom Hiring Centre: A Custom Hiring Centre (CHC) was set up in Singpur village to support farmers to access modern agricultural equipment at reasonable rates. Managed by a local Farmer Producer Company, the CHC offers a range of machinery to meet seasonal farming needs. This initiative helps reduce dependence on manual labor, enhances efficiency, and supports the adoption of improved farming methods. By easing access to essential tools, it contributes to better crop management and productivity.



3

visits per month by
farmer to the CHC



300+

farmers
served directly

Rental price range:



₹50-₹500

per equipment use

Model Backyard Poultry Rearing: A model backyard poultry initiative has been introduced to support disadvantaged women by encouraging income generation through poultry rearing. By providing indigenous breed chicks, the program promotes practices suited to local conditions. These hardy birds require minimal upkeep and offer a year-round source of income. The initiative not only enhances household financial stability but also fosters self-reliance and social empowerment.



150

women beneficiaries



11,250-12k

Income generated (Estimated)

GOAT REARING:



120

beneficiaries
received
2 Goats each



for a cycle of

150

days



Estimated
income

₹10k



1

beneficiary
received
a Goat shala



for a cycle of

150

days



Estimated
income

₹50k

Vocational skill-building training program:

A two-day vocational training program on goat and backyard poultry rearing was conducted to enhance livestock management practices among rural farmers. The training focused on key aspects like animal health, nutrition, breeding, and housing, equipping participants with practical knowledge for sustainable livestock farming. It fostered interactive learning and peer sharing, helping farmers better understand disease prevention, balanced feeding, and animal welfare. The initiative aimed to improve productivity and income through the adoption of best practices in livestock care.

Skill Development Training Centre:

A new Skill Development Training Centre has been established to empower adolescent girls through vocational training in tailoring. The initiative aims to build their skills, promote financial independence, and create livelihood opportunities. Beyond training, the center links participants to financial institutions and government schemes to support micro-enterprise development. This effort encourages local entrepreneurship enabling young women to contribute to community growth.



2

Batches



33+76=109

girls trained in each batch



2.5k-3k

Approximate income / month

Training on Financial Literacy:

A financial literacy training session was organized with **66 participants** in Kutrupala to strengthen the community's understanding of essential financial management practices. The session aimed to equip local residents with knowledge on saving, budgeting, debt handling, and accessing banking services. Facilitated by an experienced community finance trainer, the program engaged a diverse group of participants. Interactive discussions and real-life scenarios made the session highly engaging and practical. The training was well-received, with many attendees expressing increased confidence in managing their finances.

Crop Diversification Model:

In M. Rampur Block, farmers have been encouraged to adopt crop diversification as a strategic alternative to mono-cropping for better pest management, soil health, and optimization of water usage. The introduction of drought-tolerant pulses during the rabi season has reduced irrigation needs and strengthened climate adaptability. This approach empowers farmers to achieve consistent yields despite environmental challenges, resulting in long-term agricultural stability.



75

Farmers of benefitted

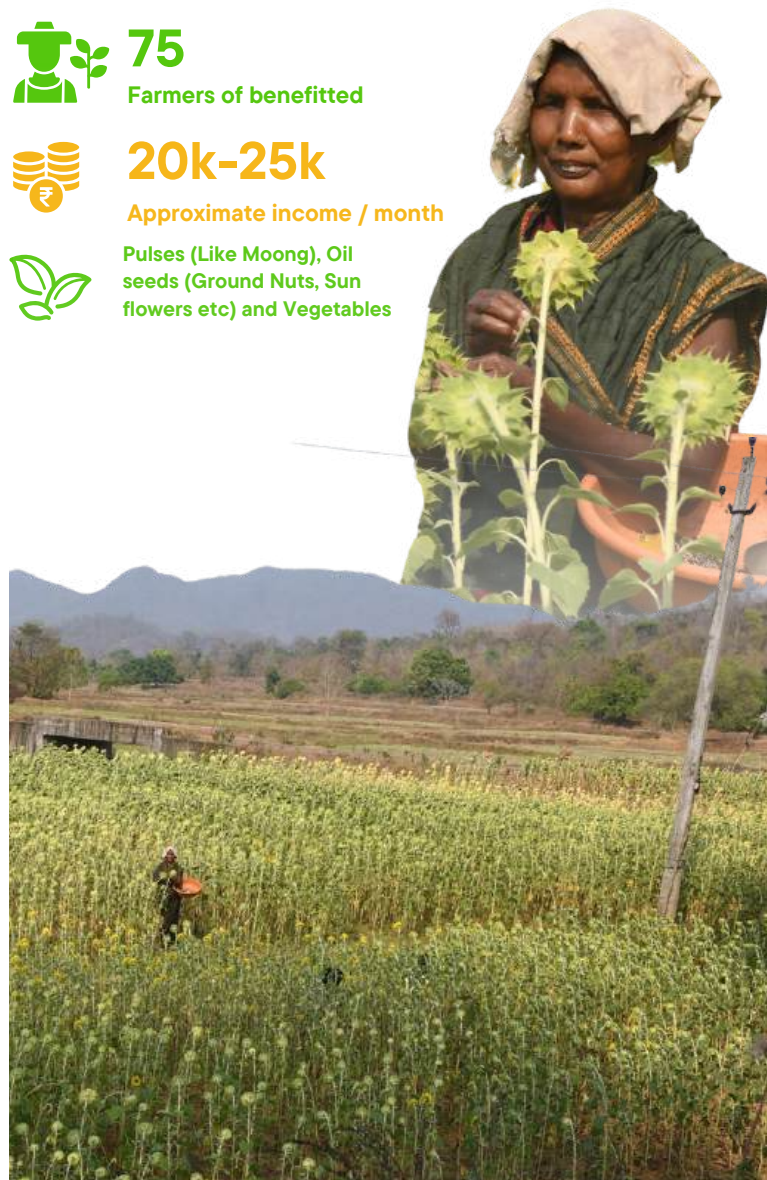


20k-25k

Approximate income / month



Pulses (Like Moong), Oil seeds (Ground Nuts, Sun flowers etc) and Vegetables



SUCCESS STORY

Tailoring Her Dreams: Tapaswini's Success Story

Background:

Tapaswini Puta, hailing from a modest background, exemplifies how skill development and resilience can reshape one's future. Her family of six depended solely on her father's small 1.5-acre farm, barely managing to make ends meet. As the eldest child, Tapaswini had to shoulder family responsibilities at the age of 21 after her father fell seriously ill. Having dropped out after the 10th grade and lacking any specialized skills, she struggled to find stable employment and was forced to take up daily wage labor to support her family.

Intervention under the Skill Development Program:

In October 2024, a Skill Development Training Centre at Dom Karlakhunta Gram Panchayat was established to empower adolescent girls and disadvantaged women in the Madanpur Rampur Block. The center offered training in basic tailoring and provided guidance on accessing financial support through the "Mudra Loans" scheme, helping women take their first steps toward entrepreneurship.

Motivated to transform her life, Tapaswini joined the three-month tailoring course in late 2024. Under the mentorship of skilled trainers, she developed her stitching and designing abilities and gradually gained the confidence to start her own business.

Success and Growth:

By December 2024, Tapaswini successfully completed the training and launched a small tailoring business, investing in a sewing machine. Her dedication quickly yielded results, earning her a steady monthly income of ₹4000–₹4500 and significantly improving her family's financial situation.

Impact and Inspiration:

Tapaswini's remarkable journey has become a beacon of hope for many women in her village. Her story stands as proof that with access to the right opportunities and a strong will, even the most difficult financial challenges can be overcome.

Her mother, Mrs. Gayatri Puta, expressed her pride, saying, **"A daughter like Tapaswini can change an entire family forever."**

Tapaswini's success underscores the transformative power of skill development in rural communities, promoting self-reliance, financial stability, and a brighter future for women.



EDUCATION:

Learning Centre:

A new learning centre named “Swami Vivekananda Learning Centre” was inaugurated at the Government Primary School campus in Mohangiri under the IVDP. The initiative focuses on supporting students of 9th and 10th grades by offering better learning resources and academic guidance. The centre aims to enhance educational outcomes, build essential skills, and promote consistent academic growth among rural students. This effort reflects a strong commitment to empowering local communities through improved access to quality education.

Support for Children Desk & Benches:

As part of the IVDP,

35 bench desks were provided to Tejipada U.P. School in Mohangiri Gram Panchayat

to improve the school's learning environment. Prior to this, students faced challenges due to inadequate seating, often sitting on the floor or sharing limited furniture, which affected their concentration. The intervention aimed to create a more comfortable and structured classroom setup, enhancing students' focus and academic engagement. The school staff and students have welcomed this support, recognizing it as a meaningful step toward better education infrastructure.

Infrastructure development Support

In M. Rampur Block, the focus was on strengthening water supply and sanitation infrastructure. Key interventions included the construction of new toilets, repair of old toilet facilities, setting up water tanks and RO systems in Tejipada Upper Primary School, installation of submersible motors with pipelines in Kuturupalla Upper Primary School, and connecting pipelines to drinking water points and washrooms in Mohangiri Upper Primary School.

In Madanpur Rampur block, Dolabahali and Jamuli Anganwadi Centres were refurbished with exterior painting, submersible motors, roof grading, and repairs to toilets and kitchen rooms.



SUCCESS STORY

Transforming Rural Futures Through Learning

In the remote village of Mohangiri Gram Panchayat, where educational resources are scarce and financial hardship is common, the Swami Vivekananda Coaching Centre has emerged as a beacon of hope for young learners. This free coaching centre was established with the mission to support Class 9 and 10 students, especially those from underprivileged backgrounds who cannot afford private tuition.

Currently, 35 students are enrolled in the centre. Most come from families that struggle to make ends meet and have never had access to quality academic support. The centre offers focused coaching in core subjects like Mathematics, Science, and English, thanks to the dedication of volunteer educators. The goal is not just to help them pass, but to empower them to excel in their Class 10 Board Exams.

Beyond academics, the centre is nurturing confidence, discipline, and ambition among rural students. For many, it's the first time they've been able to dream of becoming teachers or government officers. Parents, too, are now more hopeful and actively engaged in their children's education.

The centre has created a learning space where every child is given an equal opportunity to grow and succeed, regardless of their economic background. Through education, it is building a brighter, more empowered future for the entire community.

Swami Vivekananda Coaching Centre is a true example of how education can ignite change and uplift rural youth from poverty to possibility.



"Before joining Swami Vivekananda Coaching Centre, I used to struggle with subjects like Mathematics and Science. My parents couldn't afford private tuition, and I felt like I was falling behind. But after attending the free classes here, my understanding and confidence have improved a lot. The teachers are very supportive and explain everything clearly. I've started scoring better in my exams, and now I believe I can do well in my Class 10 Board Exams. I want to become a teacher in the future so I can help students like me. I'm very thankful to the centre for giving me this opportunity and showing me the right path."

– Doleswari Sahu



HEALTH & NUTRITION

Training workshop for Pregnant & lactating women: A training session was organized at the Mohangiri Gram Panchayat office to raise awareness among pregnant women and lactating mothers about exclusive breastfeeding and healthy eating habits. The program focused on promoting maternal and infant health by equipping participants with practical knowledge to make informed nutritional choices. The session encouraged women to share experiences and clarify doubts, creating an open and supportive learning space.

43  **Participant**

Importance:

Provides essential nutrients and antibodies

Support baby's growth and

Bolster the baby's immune system

(MIYCN) Block-level training: A Maternal, Infant, and Young Child Nutrition (MIYCN) training program was conducted at the block level to promote awareness on essential nutritional practices for women and children. The session focused on key topics like balanced diets, exclusive breastfeeding, and complementary feeding. Emphasis was placed on community involvement and empowering women to adopt and share healthy nutritional habits. The program concluded with participants expressing a strong commitment to applying the knowledge in their daily lives, contributing to better health outcomes for their families.



Participants Involved:

60+

Adolescent girls, Pregnant, Lactating Mothers



Anganwadi Workers & Helpers

CRP
(Community Resource Persons)

Nukkad Natak on Child Health and Nutrition:

Engaging Nukkad Natak initiatives were undertaken to spread awareness on vital health and education topics across rural communities in the M. Rampur Block. These plays focus on issues like the first 1000 days of life, exclusive breastfeeding, primary health care, sanitation, school dropout, and the right to education. Performed in local dialects such as Sambalpuri and Kui, the acts use traditional music and dance to ensure the message is relatable and memorable. This culturally rooted approach creates an interactive learning environment, encouraging community participation and dialogue and promoting lasting social change from within.



Carried out in 10 villages across 5 Gram Panchayats in M. Rampur.

Nutritional Kitchen Gardens: To strengthen health and nutrition among vulnerable groups, the nutritional kitchen gardening initiative has been started for lactating mothers, pregnant women, and anaemic adolescent girls. These individuals were identified based on their nutritional needs, with a focus on improving access to essential micronutrients. The initiative promoted the establishment of low-cost home nutrition gardens to address these deficiencies, simultaneously empowering women and girls to grow their own food.



A variety of leafy seeds, vegetable saplings, and nutritious plants such as Moringa, Papaya, Banana, and Lemon.



250

 **Beneficiaries**

Training on "1000 Days of a Child's Life": A "1000 Days Child Life Care" training program was organized in Mohangiri to raise awareness on the criticality of the period from conception to a child's second birthday. The session covered topics on nutrition, hygiene, antenatal and postnatal care, and early childhood development. Emphasis was placed on the caregiver's role in promoting well-being and preventing malnutrition and illness.

61  **Beneficiaries Participated**

Health Screening Camp : A health screening camp was conducted at the Mohangiri Panchayat campus to offer free medical check-ups and promote awareness of common health concerns such as diabetes, hypertension, and anemia. Community members underwent tests for blood sugar, blood pressure, and hemoglobin levels to identify potential health risks and enable early intervention. The camp played a vital role in improving public understanding of basic health issues and bringing essential health services to the doorstep of the rural people.

3 **Days**
camp

Referred to nearest PHC/CHC

391  **Screened People**

Celebration of National Nutrition Month As part of National Nutrition Month, an awareness event was held in Singpur Gram Panchayat to promote the importance of nutrition. The session emphasized preventing common nutritional deficiencies through simple dietary practices and incorporating local foods into daily diets. A live demonstration on setting up a backyard nutrition garden showcased how families can grow their own vegetables and greens sustainably.



SUCCESS STORY

From Worry to Wellness: Nutrition Garden Changed One Woman's Pregnancy Time

Background

In the remote village of Dam Karlakhunta under Madanpur Rampur Block, life often unfolds amidst limited resources and persistent challenges. For women like Chandrakanti Kumar, maternal health is not just about personal well-being – it's a journey of resilience, determination, and hope. Hailing from a modest tribal household, Chandrakanti's pregnancy was filled with concerns: What should she eat? Would she be able to keep herself and her unborn child healthy in an environment where fresh, nutritious food was not always accessible?

Intervention Under IVDP

Recognizing the crucial link between nutrition and maternal health, Mahashakti Foundation stepped in with a simple yet powerful solution: home-based nutrition gardens.

Chandrakanti was identified as a beneficiary under the program and was encouraged to start her own backyard garden. She was provided with high-nutrition saplings like moringa and papaya, both rich sources of iron, calcium, and essential vitamins. Additionally, she received seeds of commonly used and easily grown vegetables like spinach, radish, tomato, brinjal, and chilly. This ensured a steady, year-round supply of fresh, chemical-free vegetables, right from her own soil.

But the support didn't stop at agriculture. Chandrakanti also underwent training on Maternal, Infant and Young Child Nutrition (MIYCN). Through interactive sessions, she learned about the importance of prenatal care, the role of balanced meals during pregnancy, and the long-term benefits of exclusive breastfeeding for newborns.

Impact and Outcome

With this dual intervention, practical access to nutritious food and essential health education, Chandrakanti was able to take charge of her own well-being. Her pregnancy progressed smoothly, and she experienced fewer health complications than expected. Recently, she gave birth to a healthy baby, and she credits this positive outcome to the fresh vegetables she consumed daily and the awareness she gained through the program.

Her garden, once an empty patch of land, has now become a vibrant source of nourishment and pride. Today, she continues to grow vegetables not only for her family's needs but also to share with neighbours in need.

Testimonial

"My name is Chandrakanti, and I live in Dam Karlakhunta village under Madanpur Rampur Block. When I was pregnant, I often worried about what to eat to keep myself and my baby healthy. We mostly relied on the vegetables available in the market, but even getting those wasn't always easy. Sometimes, we had to make do with very little. I wished for a steady supply of fresh and healthy food, but it felt out of reach back then"

Community Ripple Effect

Inspired by Chandrakanti's transformation, several other women in the village have come forward to start their own nutrition gardens. Her story is now a living example of how small, low-cost interventions, when thoughtfully designed, can empower rural women to take ownership of their health, nutrition, and future.



BLOCKWISE INTERVENTION

PAIKMAL BLOCK

Despite being part of Odisha's agricultural heartland, Paikmal block in Bargarh district grapples with infrastructure and development gaps. With a literacy rate of 66.04%, 41.8% of women were found to be illiterate, and 64.9% identified as housewives, signaling a low level of participation in economic activities. Though 80% of the population is dependent on agriculture, irrigation coverage is limited to only 44% during Kharif and 27% during Rabi seasons. Paikmal also has a high percentage of Scheduled Tribe population (38.3%), which often correlates with lower access to services and opportunities, making it a region with both needs and potential for growth in diversified livelihoods and education support.

1. ENVIRONMENT & ECOLOGICAL SUSTAINABILITY

Excavation of New Farm Pond: The excavation of a new farm pond in Kendupadar village, under Tentulikhunti Gram Panchayat, marks a transformative step in advancing agricultural development in the region. Designed as a critical water resource, the pond plays a pivotal role in providing a reliable source of water for irrigation. With its substantial storage capacity, the pond is set to significantly boost agricultural productivity by reducing the farmers' reliance on erratic rainfall.





Renovation of Farm Pond: The renovation of an existing farm pond in Bartunda village, Paikmal Block has reinforced the pond's structure, ensuring it serves as a dependable water source for irrigation during key phases of crop production. This intervention supports farmers in improving their yields by reducing dependence on erratic rainfall and enhancing water availability. The presence of water throughout the dry months also helps retain soil moisture and contributes to groundwater recharge.



2
Excavated Pond



60 Acres
Land Irrigated



29
Farmers of
benefitted



55,80,000
Water holding
Capacity in Litres

Check dam:

To strengthen agricultural resilience in the drought-prone region of Paikmal Block, a check dam is being constructed in Brahmantal village under Bartunda Gram Panchayat. The dam is designed to harness rainwater which is captured and stored to be used during dry spells to support nearby farmland. the dam serves as a vital step toward ensuring more reliable irrigation and improving crop productivity for local farmers.



1
check dam
constructed



18 Acres
Land Irrigated



15
Farmers of
benefitted



5,40,000
Water holding
Capacity in Litres



Diversion weir:

Two diversion weirs have also been constructed in Pipalkhunta and Jhitki villages, under Mithapali and Jhitki Gram Panchayats in Paikmal Block. These weirs are being installed at strategic points along the stream to control and redirect water flow towards agricultural fields. This is used to optimize water distribution, extend irrigation coverage, and provide a steady water supply throughout the growing season. Together, these water management structures are poised to create long-term benefits for farming communities by increasing water security.



41 Acres
Land Irrigated



31
Farmers of
benefitted



2,16,000
Water holding
Capacity in Litres



Fruit-bearing orchard promotion:

The promotion of fruit-bearing orchards across several Gram Panchayats in Paikmal Block marks a significant step toward supporting local farmers with secure livelihood options. Saplings of regionally suitable fruits like mango, guava, lemon, and coconut were distributed, aligning with the area's soil and climate conditions. This helps farmers diversify their cropping patterns, reducing dependence on crops that are vulnerable to climate-related risks.

Model Nursery:

The establishment of a model nursery in Jhitki Gram Panchayat, Paikmal Block, marks a progressive step in reinforcing local agricultural systems. Operated by a Farmer Producer Organization, the nursery provides farmers with year-round access to high-quality saplings at affordable prices. Equipped with modern features like climate control and efficient irrigation, it ensures healthy plant growth and reliable supply. This initiative contributes to better yields and long-term livelihood security of the farming community.



4-5
Batches per Year



15k-20k
no's Capacity of saplings



Average Income
generated Up to
30k / batch



Available saplings
Tomato, Chilli, Brinjal,
Cauliflower, Cabbage,
Pumpkin, and so on



Solar Cold Storage Units: This region experiences substantial post-harvest losses due to the absence of cold storage facilities. With approximately 85% of the population involved in farming, excess vegetable production often goes to waste, severely affecting farmers' earnings. To tackle this problem,



2 solar-powered cold storage units, each with a 5-metric-ton

capacity, were set up in Sarabeda village of Mohangiri Gram Panchayat.

Solar Street Lights: The introduction of solar lighting in Paikmal has addressed the lack of proper illumination in village interiors and communal spaces. This has not only reduced incidents of nighttime accidents but has also supported safer participation in evening livelihoods and social activities. The use of clean solar energy aligns with the block's broader push for sustainable development under the IVDP.



4 Number of Lights Installed



SUCCESS STORY

Harvesting Hope: Water Security and Livelihood Growth in Paikmal

Background:

Mr. Birja Dau, a 57-year-old farmer from Bartunda village in Paikmal Block of Bargarh District, has long depended on paddy cultivation to support his family of six, including his wife, three sons, and daughter-in-law. Despite owning 3.5 acres of land near the forest fringe, his agricultural productivity was severely limited due to the absence of irrigation facilities, restricting him to a single Kharif season. As climate change and erratic rainfall patterns grew more pronounced, Birja struggled to sustain a consistent income from farming.

Intervention under the Integrated Village Development Program (IVDP):

To address these challenges, Mahashakti Foundation undertook the renovation of an existing farm pond in the village. The pond was upgraded to a size of 40m × 40m × 1.8m, increasing its capacity to 2.8 million liters. This development ensured year-round access to irrigation for Birja and nine other farmers in the community.

With the availability of water, Birja was able to carry out irrigation during the critical Rabi season (mid-November to March). Additionally, the project facilitated technical training on water conservation, crop diversification, and efficient irrigation practices. Exposure visits and expert guidance further encouraged Birja to shift toward cultivating water-efficient cash crops such as pulses, oilseeds, and millets.

Impact and Growth:

Equipped with assured irrigation and improved agricultural knowledge, Birja cultivated 1.5 acres of moong dal and 0.5 acres of tomatoes. From his first three tomato harvests, he earned approximately ₹60,000, with an initial investment of ₹25,000. With two to three more harvests expected, his income is set to rise further. His moong dal crop is also nearing harvest, promising additional revenue. The intervention has helped increase his agricultural income by nearly 50%, while also providing income stability throughout the year.

Community Impact:

Birja's success has become a catalyst for change in the region. His experience has inspired other farmers to adopt similar water management and crop diversification practices. The concept of renovated farm ponds and lift irrigation is gaining traction, contributing to higher yields, improved food security, and sustainable livelihoods in Bartunda and nearby villages.

Testimonial:

With a broad smile, Mr. Birja Dau shared his appreciation:

"Mahashakti au LTIMindtree Foundation amar lagi debta saman kaam karichhe, chaas lagi amku pani deichhe, hethir lagi bahut bahut dhanyabad."

(Mahashakti and LTIMindtree Foundation have done a god-like act by bringing water for our farming. We are truly grateful.)

Conclusion:

Birja Dau's journey demonstrates the powerful impact of targeted interventions in water conservation. Through infrastructure development, capacity building, and sustained support, rural farming communities like his are now equipped to embrace agricultural resilience, increase income, and secure a better future.



2. EMPOWERMENT

Custom Hiring Centre: In Surungidadar village of Paikmal Block, the launch of a CHC has opened new avenues for farmers to access modern agricultural machinery without heavy investment. Operated by a local Farmer Producer Company, the CHC offers essential equipment during peak cultivation periods. This approach not only reduces the financial burden on individual farmers but also streamlines farm operations. By bridging the gap between traditional farming and mechanization, the CHC plays a key role in advancing rural livelihoods and agricultural growth in the region.

Model Backyard Poultry Rearing: In an effort to strengthen livelihood opportunities for rural women, a group of beneficiaries were supported with indigenous poultry. Each participant was provided with young chicks to rear, offering a practical, low-cost avenue to supplement household earnings. Native poultry breeds are well-adapted to the local environment and require minimal inputs.

♀ **150**
women beneficiaries

₹ **11,250-12k**
Income generated (Estimated)

GOAT REARING:



120
beneficiaries
received
2 Goats each



For a cycle of
150
days



Estimated
income
₹10k



1
beneficiary
received
a Goat shala



for a cycle of
150
days



Estimated
income
₹50k





- **Vocational skill-building training:** A two-day vocational training program was conducted in Paikmal Block with the aim of bolstering livestock-based livelihoods among rural farmers. Focused on goat and poultry farming, the sessions introduced best practices in shed construction, feed and disease management, and the use of resilient indigenous breeds. The program offered practical insights into efficient livestock care and establishment of a goat bank to ensure long-term support for selected farmers.
- **Skill Development Training Centre:** A Skill Development Training Centre has been established with the goal of empowering unemployed adolescent girls by equipping them with practical, livelihood-oriented skills. Focused on enhancing self-employability, the centre offers tailored training that enables young women to become financially independent and contribute to their household income. It not only caters to individual growth but also addresses the broader challenge of youth unemployment.



2

Batches



46+67=113

girls trained in each batch



2.5k-3k

Approximate income / month

SUCCESS STORY

Harvesting Hope: Water Security and Livelihood Growth in Paikmal

Background:

Namita Pandey, a 19-year-old girl from Cherangajhanj village in Paikmal block, was forced to discontinue her education after completing Class 10 due to her family's poor financial condition. Although she aspired to study further and build a better future, limited resources and household responsibilities confined her to the home, leaving her with no pathway to personal or economic independence.

With few opportunities in sight, Namita's dreams remained unfulfilled, until a new door opened.

Intervention and Skill Development

In October 2024, a tailoring training centre in her Gram Panchayat under the Integrated Village Development Program (IVDP). Recognizing an opportunity for change, Namita enrolled in the program with enthusiasm and determination.

Over the course of the training, she learned the fundamentals of tailoring, from cutting and stitching to designing blouses and customizing garments. Guided by experienced trainers and through continuous practice, she grew confident in her skills. Upon completion, Namita invested in a sewing machine and set up a modest tailoring unit at home.

Impact and Outcome

Today, Namita runs her own home-based tailoring business. She offers blouse stitching and custom tailoring services for women in her village and surrounding areas. Through her efforts, she now earns approximately ₹6,000 per month - while working from home.

Her financial independence has not only brought stability to her household but also earned her admiration in the community. Namita's success has encouraged other young girls in the village to pursue skill development and explore livelihood opportunities.

Testimonial

"I am grateful to Mahashakti Foundation and LTI Mindtree Foundation for providing me with the opportunity to receive tailoring training. With the skills I gained, I purchased my own sewing machine and set up a small tailoring business at home. Now, I earn between ₹6,000 to ₹7,000 every month, and I am incredibly happy and fulfilled with the financial independence this has brought me."

("ମୁଁ ମହାଶକ୍ତି ଫାଉଣ୍ଡେସନ୍ ତରଫରୁ ସିଲାଇ ଶିକ୍ଷା ପାଇଛେନ୍ତି। ମୁଁ ଟେଲିଂ ମେସିନ୍ ଟି ଆଣି କରିଦିଲେ ରଖୁଆକରି ସିଲାଇ କରେଇଲେ ଆଉ ମାସକୁ ୬-୭ ହଜାର ଟଙ୍କା କମାଉଛେନ୍ତି। ମୁଁ ବହୁତ ଖୁସି ଅଛେନ୍ତି।")

Conclusion

Namita Pandey's journey from a school dropout to a self-made entrepreneur is a powerful testimony to the transformative power of skill-based training and community support. Her story highlights how timely intervention and access to livelihood opportunities can empower young women in rural areas to build lives of dignity and self-reliance.

Namita expresses her heartfelt gratitude to Mahashakti Foundation and LTI Mindtree for lighting the path to her transformation - proving that real change begins with a single opportunity.



3. EDUCATION

Swami Vivekananda Learning Centre:

A dedicated Coaching Centre has been launched with the goal of supporting academic growth among high school students. With a focus on core subjects such as Science, Mathematics, and English, it is designed to deepen conceptual understanding and build student confidence. The Swami Vivekananda Learning Centre serves as a key academic hub, offering structured guidance and subject-specific support. By providing a focused learning environment, the centre aims to uplift academic outcomes and empower students to meet future challenges with greater readiness.

Infrastructure development Support

In Paikmal Block, efforts were focused on improving access to sanitation and hygiene facilities. This included the construction and installation of boys' urinals, repairing of existing toilet structures and water supply points in Kudharifasa Upper Primary School and renovation of toilets and provision of handwash points in Dudukijharia Upper Primary School.

Makhanamunda and Kudharifasa Anganwadi Centers received extensive upgrades, including building renovation, exterior painting, and the installation of drinking water points with RO systems. Additional infrastructure, such as water boring, toilet construction, handwash points, fencing, and shed construction, was also developed.



SUCCESS STORY

A Second Chance at Education: Purandar's Path Back to School

Background

Purandar Dharua, a determined 15-year-old student from Motipali village in Paikmal block, faced a major disruption in his education journey. In August 2024, he was diagnosed with a severe skin condition that required extended medical treatment, forcing him to discontinue school temporarily.

As a result of this prolonged absence, Purandar missed the admission window for Class 10 at Indira Priyadarshini High School, where he had been enrolled previously. When he returned in June 2025, eager to resume his studies, the school authorities denied his re-admission citing procedural delays. This denial left Purandar disheartened and uncertain about his future.

Intervention and Support

Recognizing the gravity of the situation, the Mahashakti Foundation team stepped in to safeguard the child's right to education. Several rounds of discussions were held with the staff of Indira Priyadarshini High School to reconsider Purandar's case. Despite persistent efforts, the school remained unwilling to reverse its decision.

Refusing to give up on the child's aspirations, the team approached Government High School, Paikmal, and sensitized them about Purandar's circumstances and the importance of giving him a second chance. Moved by his story and determination, the principal and staff of Government High School agreed to enroll him into Class 10.

Outcome and Impact

Thanks to the timely intervention and advocacy of Mahashakti Foundation and support from LTI Mindtree, Purandar is now back in school and attending classes regularly. Re-energized by the support he received, he is preparing diligently for his upcoming board examinations. His confidence has been restored, and he is once again on a path toward a brighter future.





Testimonial

“After completing Class 9, I had to discontinue my studies due to a serious illness. When I tried to return to school, I was denied admission. It felt like my dream of continuing my education had come to an end. But then, the team from Mahashakti Foundation stepped in. They took the initiative and helped me secure admission at Paikmal High School. Today, I have successfully appeared for my Class 10 board exams and I am hopeful of achieving good results. I am truly grateful for this second chance.”

(“ ମୁଁ ୯ କ୍ଲାସ୍ ପରେ ମୋର ଦେହ ଖରାପ ହେବାରୁ ମତେ ଆଉ ସ୍କୁଲ୍ ବାଲେ ଆଡମିସନ୍ ନାହିଁ କଲେ। ତାପରେ ମହାଶକ୍ତି ଫାଉଣ୍ଡେସନ୍ର ଷ୍ଟାଫ୍ ମାନେ ମତେ ନେଇକି ପାଇକମାଲ ହାଇସ୍କୁଲ୍ରେ ନାଁ ଲେଖେଇଦେଲେ। ଏନା ମୁଁ ଏବେ ଏଗ୍ଲାମ୍ ଦେଇଛେନ୍ ଆଉ ଭଲ ନମ୍ବର ରହିବା ବୋଲି ମୋର ଆଶା ଅଛିନ୍। “)

Conclusion

Purandar Dharua's story is a compelling example of how rural children continue to face barriers to education due to health issues, administrative rigidity, and lack of support systems. However, it also highlights the transformative impact of timely community intervention and compassionate decision-making.

”

4. HEALTH & NUTRITION

Awareness workshop on Primary Health Care and Sanitation: An awareness workshop on Primary Health Care and Sanitation was conducted in Paikmal Block, bringing together community leaders, health professionals, and local stakeholders to discuss key health challenges and solutions regarding nutrition, hygiene, sanitation, and access to safe drinking water, encouraging group discussions that emphasized shared responsibility and grassroots action. Speakers stressed the importance of coordination between health committees and Gram Panchayats for effective fund utilization and improved service delivery, building stronger community ownership around public health.

National Nutrition Month: Pathrel village in Paikmal Block hosted a lively celebration as part of National Nutrition Month, focusing on the importance of maternal and child health. The event brought together pregnant and lactating women, community leaders, health experts, and frontline workers to raise awareness about the role of balanced diets during pregnancy and early childhood. Demonstrations on preparing nutritious meals using local, affordable ingredients were held, along with an introduction to backyard nutrition gardens as a sustainable solution for improving household nutrition.

Health Screening Camp: A health screening camp was organized to provide complimentary medical examinations and raise awareness about prevalent health issues like diabetes, high blood pressure, and anemia. Residents participated in screenings for blood sugar, blood pressure, and hemoglobin to detect possible health concerns and encourage timely treatment. This initiative significantly contributed to enhancing health literacy among rural communities while ensuring essential healthcare services were accessible at the grassroots level.

3 Days
camp

Referred to nearest **PHC/CHC**

398 
Screened People

Celebration of World Breast Feeding Week: World Breastfeeding Week was observed in Jamseth Gram Panchayat, with a focus on promoting the health benefits of breastfeeding and maternal nutrition. Speakers highlighted the nutritional value of mother's milk, its role in boosting immunity, and the importance of continued support from families and community structures. Participants were also informed about complementary feeding after six months, encouraging long-term nutritional care.



SUCCESS STORY

From Anemia to Advocacy: A Rural Mother's Transformation

Background:

In the remote village of Paikmal Block in Bargarh district, many women silently endure health issues, unaware of their long-term consequences. Among them was Anjana Mallik, a young mother who, while breastfeeding her child, frequently felt weak and exhausted—assuming it was a normal postnatal condition. However, during a routine health screening camp organized, Anjana was diagnosed with severe anemia, with a hemoglobin level of just 6.5 g/dL. Her infant also showed signs of anemia, which was affecting the child's overall development.

Intervention:

Upon diagnosis, Anjana was immediately supported through a structured healthcare and nutrition plan. She received iron and folic acid supplements and underwent personalized dietary counselling, focusing on the incorporation of iron-rich foods in

her daily meals. She was also introduced to the Tiranga Thali model, promoting balanced and colourful nutrition on every plate. To ensure a sustainable source of healthy food, Anjana was encouraged to establish a backyard nutrition garden, where she began cultivating green leafy vegetables and other nutrient-rich crops. In addition, she actively participated in community awareness meetings that deepened her understanding of maternal and child health.

Motivated by the visible improvement in her health and that of her child, Anjana began advocating for better nutrition and healthcare among other women in her village.

Impact and Growth:

In just four months, Anjana's hemoglobin level rose to 10.8 g/dL, and her baby's health improved significantly. Her visible transformation inspired other women in the village to pay attention to their health. Several mothers began adopting the Tiranga Thali approach, creating kitchen gardens, and attending nutrition and health awareness sessions.





Anjana's experience has catalyzed a community-wide shift toward better health practices, especially among young mothers, laying the foundation for improved maternal and child health outcomes in the region.

Testimonial:

"Thanks to the support from LTIMindtree Foundation and Mahashakti Foundation, my health has drastically improved. With proper nutrition, iron supplements, and a backyard garden, I regained my strength and energy. My baby's health also improved, and I became a source of inspiration for other women in my village. This journey has not only transformed my health but has also empowered our entire community to live healthier lives."

— Anjana Mallik

Conclusion:

Anjana's story demonstrates how timely health interventions, nutrition education, and community engagement can bring about lasting change. Her transformation from a severely anemic young mother to a community health ambassador stands as a testament to the power of integrated rural development and women's empowerment.

”

WAY FORWARD

Future Roadmap

As Mahashakti Foundation advances its mission through the Integrated Village Development Program, the path ahead centers on sustainability, scalability, and deep-rooted community ownership. Having achieved notable success in Bargarh, Balangir, and Kalahandi, Mahashakti now aims to expand its reach across rural Odisha. Scaling impact to additional villages and blocks will replicate the integrated model's success in addressing socio-economic and environmental vulnerabilities. A key pillar of this expansion is the strengthening of grassroots institutions - SHGs, FPGs, and Village Development Committees - ensuring local leadership, governance, and sustainability of development efforts even after external interventions conclude.

To build resilience in the face of climate change, the MSF, with the support of LTIMindtree Foundation, will intensify efforts in water conservation, climate-smart agriculture, and renewable energy adoption. Promoting ecological sustainability not only secures livelihoods but also safeguards future generations. At the core of IVDP's inclusive strategy is the empowerment of women - through access to skills, assets, and leadership opportunities, the Foundation seeks to expand income-generating activities and elevate women as key agents of change. Similarly, health and nutrition will be addressed by enhancing local systems via digital tools, community health worker training, and stronger government linkages to improve maternal and child well-being. There are also plans to bolster school infrastructure, teacher development, and student learning outcomes while equipping young people with skills for employment and entrepreneurship. Technology and innovation will be leveraged to strengthen data systems, e-learning platforms, agriculture advisories, and financial inclusion initiatives. Finally, strategic partnerships with government bodies, academia, and civil society will be deepened to co-create scalable, innovative solutions and advocate for policy change. By evolving with community needs and embracing integrated, inclusive growth, the IVDP stands as a replicable and resilient model for sustainable rural development in India.





REGISTERED OFFICE:

Sanchaya Shakti Bhawan, Burat
Madanpur Rampur, Kalahandi,
Odisha, Pin- 766102
81180 62107

HEAD OFFICE:

1st Floor, Lane II, Mahalaxmi
Nagar, Balangir - 767001, Odisha

STATE COORDINATION OFFICE:

HIG- 05 & 189, Dharma Vihar,
Bhubaneswar- 751030. Odisha

✉ mahashakti@mahashaktiindia.org

☎ 80181 64596

🌐 mahashaktifoundation.in

- **Instagram:** mahashaktiodisha
- **Facebook:** MahashaktiFoundation
- **LinkedIn:** mahashakti-foundation
- **Twitter:** msfodisha

This Annual Report is intended solely for internal circulation and is meant for donors, partners, and key stakeholders associated with Mahashakti Foundation. It is prepared for informational purposes only.